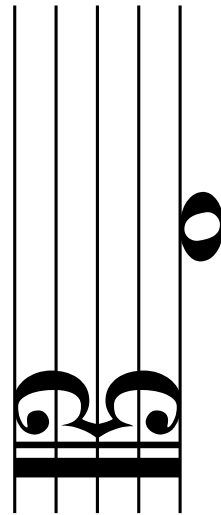
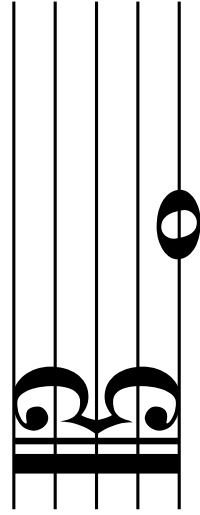
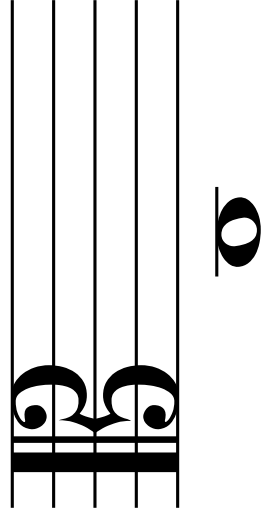
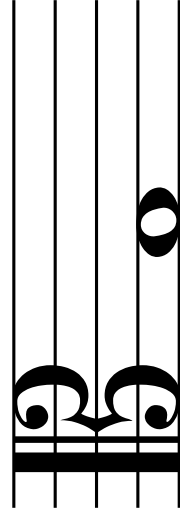
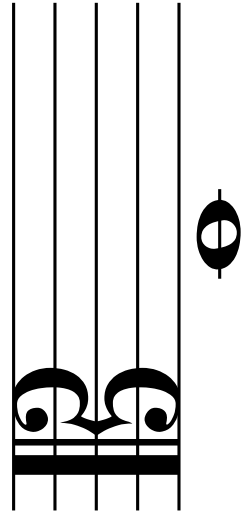


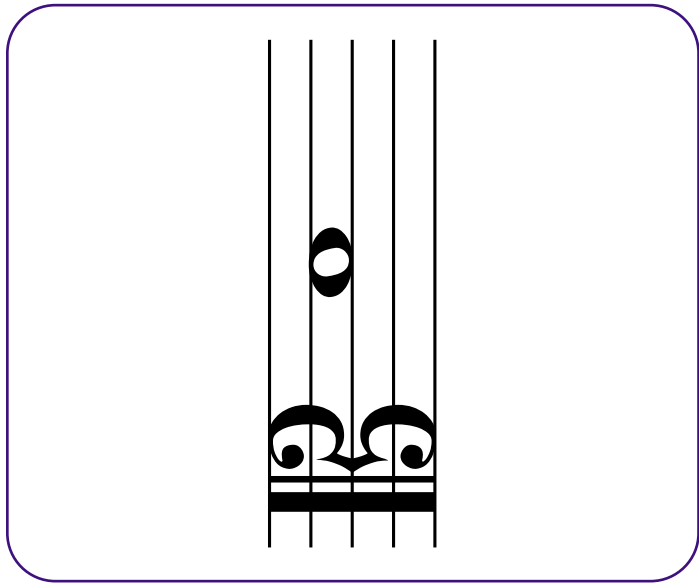
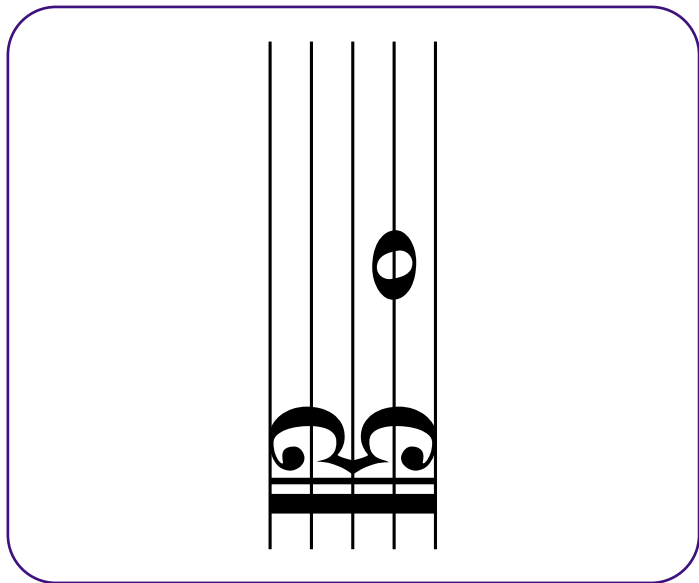
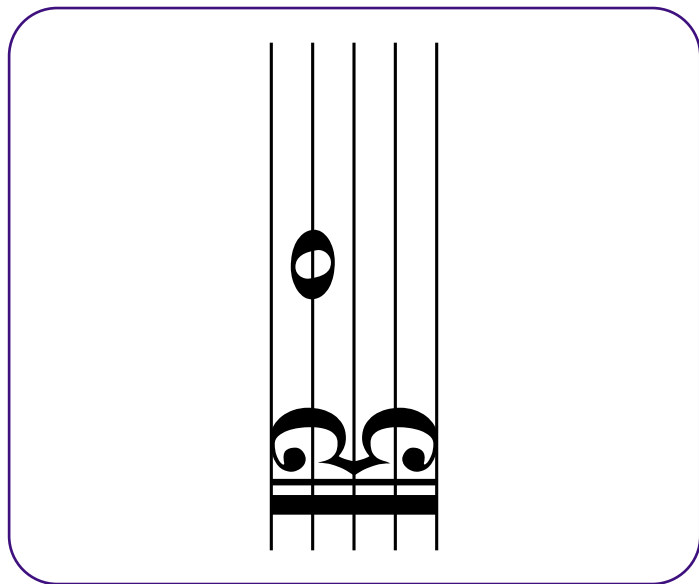
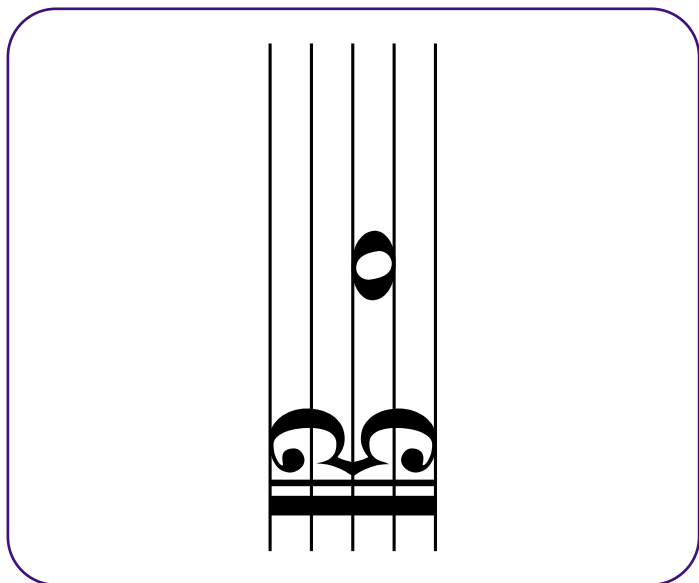
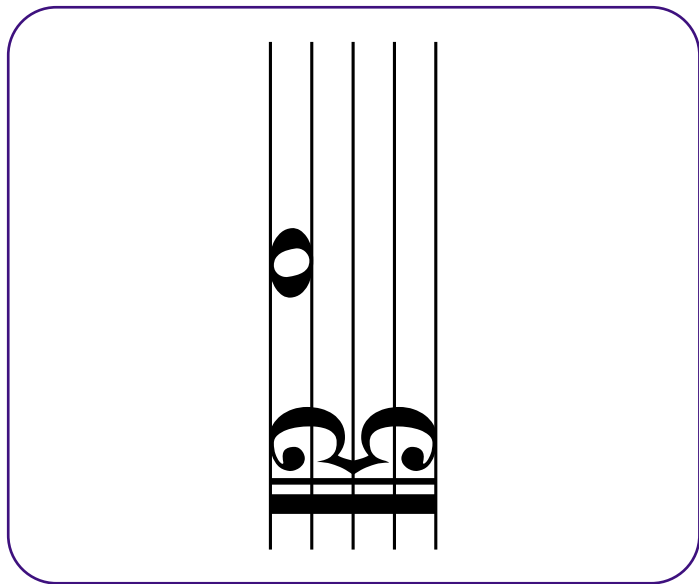
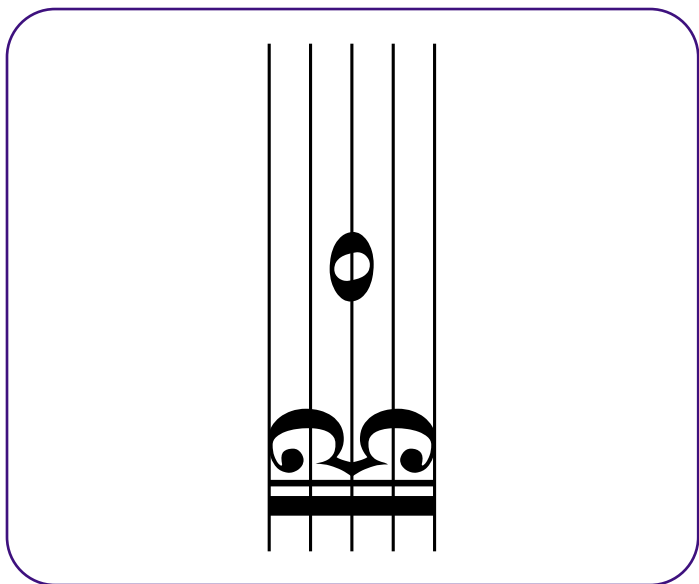


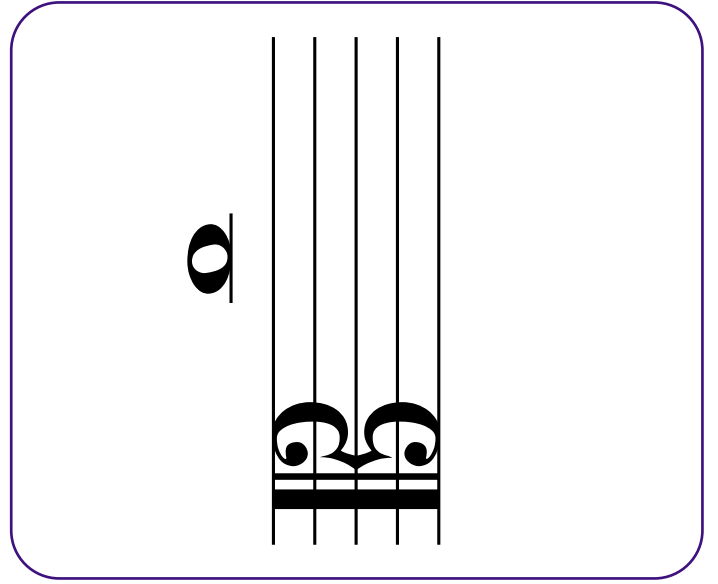
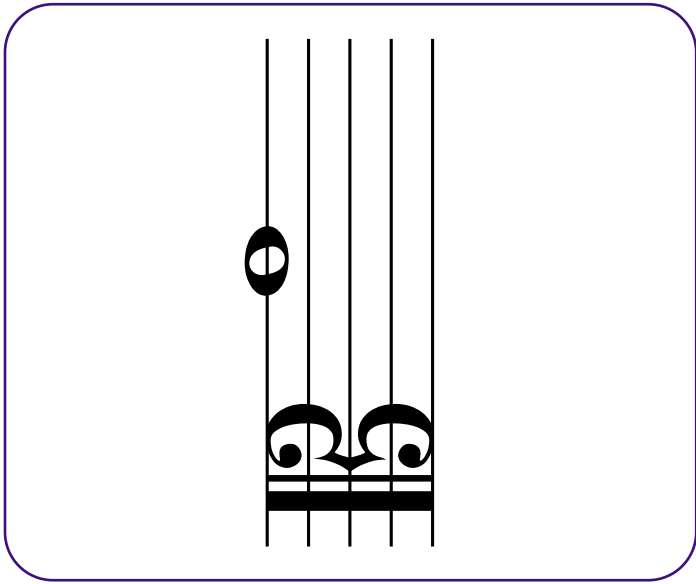
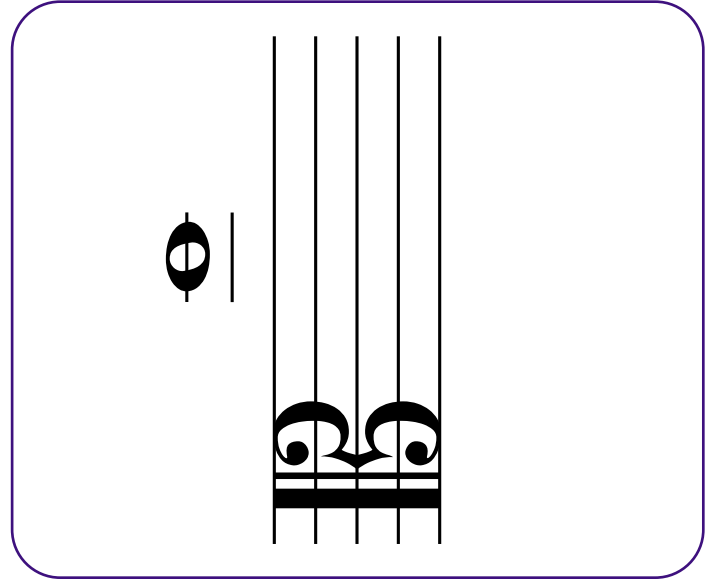
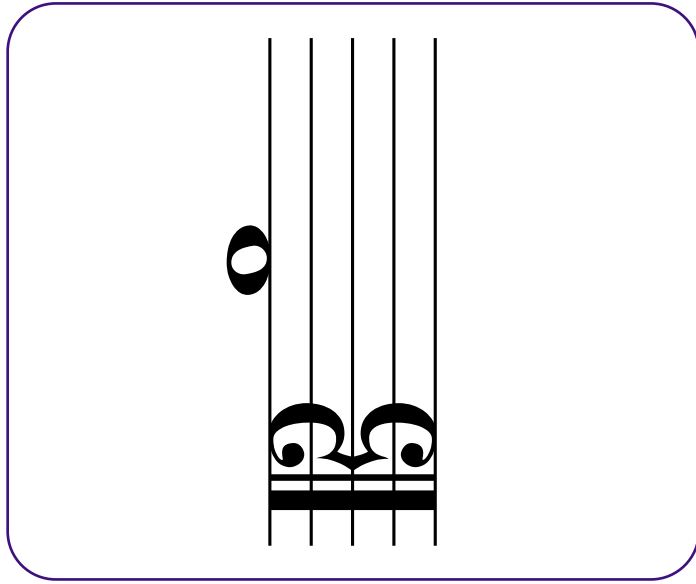
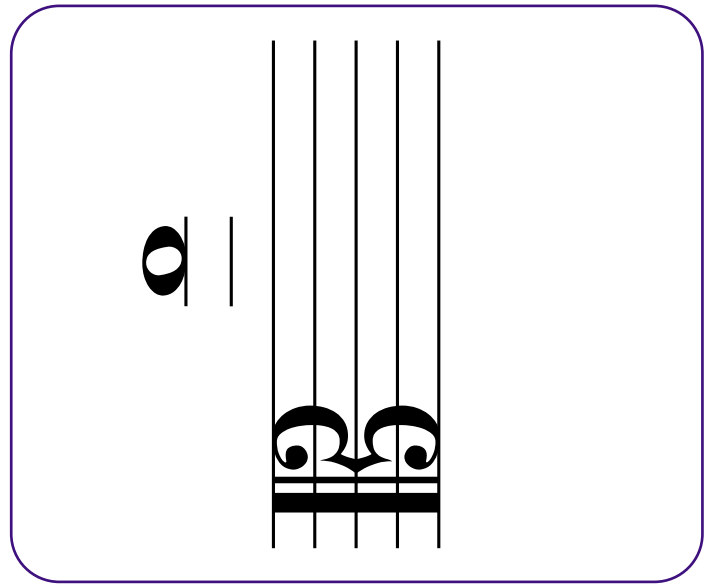
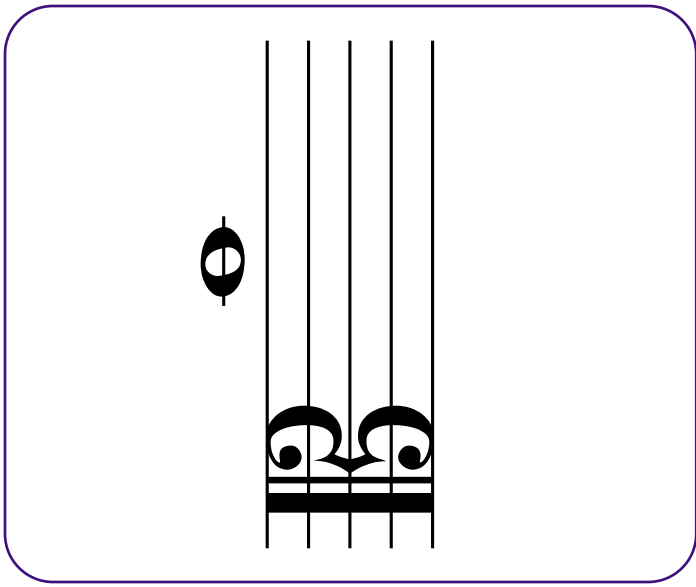
Viola Clef
Flash Cards



www.makingmusicfun.net







A musical staff with five lines. The notes are placed on the lines and in the spaces between them. Below the staff, the corresponding letter labels are written: C, D, E, F, G, A, B, C, D, E, F, G, A, B, C, D, E. The notes are: C (line 1), D (space 1), E (line 2), F (space 2), G (line 3), A (space 3), B (line 4), C (space 4), D (line 5), E (space 5), F (line 6), G (space 6), A (line 7), B (space 7), C (line 8), D (space 8), E (line 9).

